

# Great St Mary's eMag

1-17 May 2026: Issue 195

**From the Vicar:**

## **Invitation to the Annual Parochial Church Meeting (APCM) on 10 May**



Our APCM is on Sunday 10 May at 11.30am in Michaelhouse, an opportunity to review the life of Great St Mary's in 2025, as we receive reports from the various church officers, including the financial accounts, and elect church wardens, PCC members and deanery synod representatives. I would expect the meeting to last about an hour.

I am extremely grateful for everyone who is part of Great St Mary's, as members of our congregations and participating in the varied activities that make up our church life – it makes for a rich and diverse community of love, witness and service.

The *Annual Review*, lovingly put together by our PCC Secretary, Marion Cobby, provides an overview of the richness of the mission and ministry of Great St Mary's with St. Michael, and the many achievements in the last year. It is now available on the church website, together with the

*Financial Accounts (Annual Report)*. There will be some paper copies available in the back of church.

Thank you to all who have joined the Electoral Roll. Please, do attend the APCM, learn more about the church's affairs, participate in electing church wardens and PCC members and join in saying 'Thank you' to our lay representatives who give so much of their time and talents in the service of Great St. Mary's. Our church wardens, Margaret and Fiona, are willing to stand again. We have one vacancy on the PCC this year, to serve for three years, and need to elect two deanery synod members, also to serve for three years. If you would like to know more about joining the PCC, please get in touch with Marion Cobby.

I hope that many of you will join us on 10 May for the APCM at 11.30am in Michaelhouse.

With much gratitude and very best wishes,

Jutta

Revd Canon Jutta Brueck, Vicar

**Please send any eMag contributions at least two weeks prior to publication, to [news@gsm.cam.ac.uk](mailto:news@gsm.cam.ac.uk)**

### **Livestreaming of Services**

Live and past services can be accessed via the Great St Mary's YouTube page on <https://www.youtube.com/c/greatstmarys>

**Please note:** If you have any comments regarding the on-line live-streaming, please email [office@gsm.cam.ac.uk](mailto:office@gsm.cam.ac.uk)

## Worship Schedule

**May services - see [website](#) for details**

### **Sunday 3 May - Fifth Sunday of Easter**

- **8am** BCP Holy Communion
- **10am** Choral Eucharist and Children's Church
- **5pm** Choral Evensong

### **Sunday 10 May - Sixth Sunday of Easter**

- **8am** BCP Holy Communion
- **10am** Choral Eucharist and Children's Church
- **5pm** Choral Evensong

### **Thursday 14 May - Ascension Day**

- **7.45am** Singing from the tower
- **12.30pm** Eucharist in GSM
- **Afternoon** – exhibition of paintings
- **6pm** Evensong
- **6.45pm** – L'Ascension devotional performance and exhibition

### **Sunday 17 May - Seventh Sunday of Easter (Sunday after Ascension)**

- **8am** BCP Holy Communion
- **10am** Choral Eucharist with Baptism and Confirmation
- **5pm** Choral Evensong: Come and Sing for Advanced Singers

### **Regular Weekday Worship**

- Monday—Friday 9am **Morning Prayer** in church and on YouTube
- Mondays 12.30 pm **Christian Meditation** *in Michaelhouse - followed by soup lunch*
- Tuesdays 10.30am **The Ark**, Children's Communion *in Michaelhouse* (term time)
- Tuesdays 5.45pm **Choral Evening Prayer** (term time)
- Wednesdays 12.30pm **Holy Communion**
- Wednesdays 7.45pm **Choral Compline in Michaelhouse** (term time)
- Thursdays 6.00pm **Choral Evensong** (term time)

**Reading this eMag online or forwarded from a friend?**

**Sign up for our mailing list at [greatstmarys.org/emag](http://greatstmarys.org/emag)**

## News & Events

### Fri 1 May - GSM Lunchtime Concert Great St Mary's 1-2pm



Stephen Perse Foundation

The talented students of the Stephen Perse Foundation offer an engaging programme of instrumental solos and chamber music  
Matthew Rudd Director of Music

Free entry, with retiring collection

### Sun 3 May - Occasional Choir



Do you enjoy singing church music but cannot currently commit to a weekly rehearsal and services? Then the Occasional Choir might be for you.

**On 3 May we will form the choir for the 10am Choral Eucharist in Great St Mary's. Rehearsal 9.00am.**

Please contact Stanley Godfrey [stanleyg@gsm.cam.ac.uk](mailto:stanleyg@gsm.cam.ac.uk) if you would like to know in advance what we shall be singing. If not, just turn up on the day with your best sight-reading hat on!

### Tues 5, 12 May - Choral Evening Prayer

A poster for 'Choral Evening Prayer' at Great St Mary's. The background is dark with three lit candles in the foreground. The text is in a serif font. It includes the title, the time (Tuesdays 5.45pm), and contact information for the music programme.

**CHORAL  
EVENING  
PRAYER**

Sung by the  
Probationary  
Choristers  
of Great  
St Mary's

**Great St Mary's  
Tuesdays 5.45pm**  
(term time)

The music programme at  
Great St Mary's offers a  
musical education to over  
85 children drawn from  
local schools, age 5 to 18.  
To find out more:  
[greatmarys.org/music](http://greatmarys.org/music)

Music  
@  
GSM

### Wed 6 May - First Wednesday Lunch



Lunch will be in the Michaelhouse Chancel, 1-2pm. It follows on from the 12.30 Holy Communion service in GSM but there is no obligation to attend that! It is a simple lunch of soup and bread, together with fruit and home-made cake/biscuits and we invite a contribution of £5.

If you find standing in a crowd at coffee on a Sunday morning a bit tricky, this might be the place for you to come and sit and chat.

### **Thurs 7, 14 May - Chat, Play, Sing**

Chat-Play-Sing meets on Thursdays at 10am in Michaelhouse for toddlers with their parents or carers.

### **Thurs 7, 21 May - Read, Mark, Learn**

Read Mark Learn will meet virtually on Thursdays from 5 to 6 p.m. to study one of the lectionary readings for the following Sunday's Choral Eucharist. For more information, contact [davidg@gsm.cam.ac.uk](mailto:davidg@gsm.cam.ac.uk).

<https://us06web.zoom.us/j/84052562470?pwd=SWJnZ1dCcFFOTzRWdII4WGhpSG9ydz09>

Meeting ID: 840 5256 2470

Passcode: 876406

Meeting date	Passage
7 May	Acts 17.22-31
14 May	NO MEETING
21 May	Acts 2.1-21
28 May	NO MEETING

### **Fri 8 May - Lunchtime Concert**

#### **Great St Mary's 1-2pm**



#### **The Schola Cantorum of King's College School**

A programme of sacred and secular choral music sung by the girl choristers of King's College School

William Mason Assistant Director of Music

James Randle Director of Music

Free entry, with retiring collection

## Sat 9 May - Women's Breakfast



Women's Breakfast 9.30am

We meet at Michaelhouse in the Montefiore Room. All welcome to eat, chat and pray.

Please contact [office@gsm.cam.ac.uk](mailto:office@gsm.cam.ac.uk) for more information

## Sat 9 May - Come and Sing

Come and Sing Haydn's Nelson Mass Saturday 9 May at 2-4pm (with tea and cakes) in aid of the pews project at GSM! Or come to the performance at 5pm!

Participation/tickets are now bookable at Ticket Tailor:

<https://buytickets.at/greatstmarys/2156896>

We look forward to a wonderful afternoon of music-making together with the Academy of Great St Mary's Orchestra.

**COME AND SING**  
with the Academy of Great St Mary's  
and the Stapleford Choral Society  
conducted by Edward Hughes

**HAYDN'S NELSON MASS**

*Fundraising Event*

**SATURDAY 9 MAY**  
GREAT ST MARY'S CHURCH  
CAMBRIDGE

REHEARSAL: 2 - 4 PM  
(WITH TEA AND CAKES)  
PERFORMANCE: 5 - 6 PM

TICKETS FROM TICKET TAILOR  
SINGERS: £15  
CONCERT: £5 (UNDER 16S FREE)

## Sun 10 May - Rooted

# Rooted

A group for people in their 20s & 30s, exploring how to find rootedness in times of change and growth.

### NEXT SESSIONS

May 10th and June 7th

Tea & conversation in Michaelhouse, followed by Choral Evensong in Great St Mary's if you'd like to stay.



## Sun 10 May - Emmaus Youth Group



SUMMER TERM 2026

# EMMAUS YOUTH GROUP

at Michaelhouse  
for anyone in school years 5-9

FAITH \* FRIENDSHIP \* FUN ... AND PIZZA

SUNDAY EVENINGS, 18:00 - 19:15

19<sup>TH</sup> APR. 26<sup>TH</sup> APR. 10<sup>TH</sup> MAY 31<sup>ST</sup> MAY

14<sup>TH</sup> JUN. 28<sup>TH</sup> JUN.

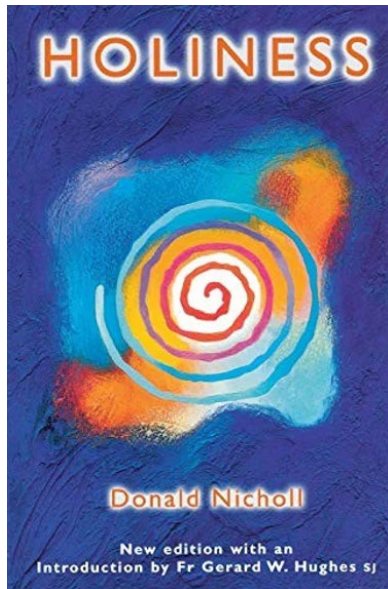
For more information, contact [clergy@gsm.cam.ac.uk](mailto:clergy@gsm.cam.ac.uk).



## Tues 12 May - Vicar's Reading Group

A monthly group to explore questions of faith and life

Tuesday evenings, 7.30 -9 at the Vicarage, 12 May, 9 June, 7 July



Book: Donald Nicholl 'Holiness' DLT, 1981, 87, 2004 to stimulate our conversation and prayer,

'A certain feeling of absurdity comes over one on being asked to write a book on holiness', writes Donald

Nicholl. Goodness cannot be produced by any kind of trick or technique. Moreover, who wants to be caught

reading a book entitled Holiness? But people do read books on holiness, hoping to grow in holiness.' Donald

Nicholl was Professor of History and Religious Studies at the University of California, Santa Cruz, and from

1981 to 1985 Rector of the Ecumenical Institute for Theological Research at Tantur, near Bethlehem, and subsequently became Senior Research Fellow at the Multi-Faith Centre, Selly Oak, Birmingham. He continued to be active in work for justice and peace until his death in 1997. 'The holy person is often presented as remote, perhaps afire with heavenly love but not giving much warmth to the rest of us. Donald's book makes it clear that our relationship with God is to be found in the way we relate to one another in all our dealings.' From the Introduction by Fr Gerard W. Hughes SJ

Please, let Jutta know, if you are interested in joining the group. Email:

[sarahh@gsm.cam.ac.uk](mailto:sarahh@gsm.cam.ac.uk)

## Wed 13 May - Book Launch

Continuing our Great St Mary's Public Theology programme series of book launches, we are delighted to host Professor John Bowker, Emeritus Professor of Religious Studies at Gresham College, London (and former fellow and Dean of Chapel of Corpus Christ and Trinity College Cambridge) at Michaelhouse on Wed 13 May, . Perhaps most known for his Oxford Dictionary of World Religions, John is a prolific author of texts, latterly focussing on the interaction between religion, sciences and what it means to be human. This latest text is an accessible overview of John Bowkers recent thought, written in his 90th year.

Books will be available on sale by donation at the launch, and John has generously ensured that all money raised will be divided between student welfare charities administered by Great St Mary's, Corpus Christi College and Worcester College (Oxford).

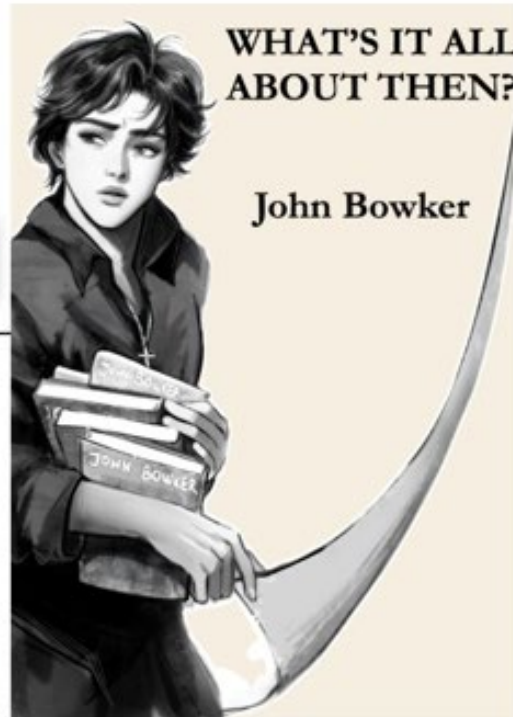


# BOOK LAUNCH

## WHAT'S IT ALL ABOUT THEN?

Its all about you!

- How is there something rather than nothing?
- Who are you?
- Why are you?
- How should I live my life?



These perennial questions, all the more pressing in this quantum age of AI and information, are addressed in this new book.

John Bowker is Emeritus Professor of Religious Studies at Gresham College, London



**Wednesday 13 May 2026  
at Michaelhouse, Trinity Street**

**5.30pm Wine, soft drinks & canapés**

**6-6.45pm Presentation by**

**Professor John Bowker with Q&A**

The book will be available to buy at a special discounted price of £15

*All proceeds of the sales will go to the Westerdale Trust,*

*to support students in need.*

*Donations can be made via the QR code*



## Thurs 14 May - Ascension Day

### The Feast of the Ascension at Great St Mary's

7.45am

**Singing from the Tower**

9.00am

**Morning Prayer**

All day

**Exhibition of artwork**  
by Ally Barrett, inspired by  
Messiaen's *L'Ascension*

12.30pm

**Holy Communion**

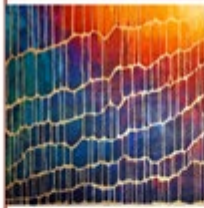
6.00pm

**Choral Evensong**

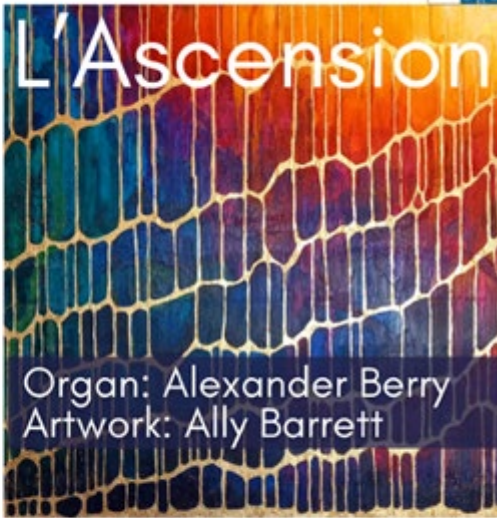
6.45pm

**Devotional performance:**  
**Messiaen's *L'Ascension***  
Organ: Alexander Berry

Thursday 14 May  
Great St Mary's  
THE ANTIQUARIAN CHURCH OF GREAT ST MARY'S



Messiaen



Organ: Alexander Berry  
Artwork: Ally Barrett

Thursday 14 May at Great St Mary's  
Artwork exhibition all day  
6.00pm Choral Evensong  
6.45pm *L'Ascension* devotional performance

## Fri 15 May - Lunchtime Concert

Great St Mary's 1-2pm



Lunchtime Concert: Julian Hellaby

Beethoven *Thirty-two variations in C minor WoO 80*

Bach *Preludes and fugues BWV 888, 889*

Cheminade *Two Studies (op.28, op.132)*

Rawsthorne *Four Bagatelles*

Revutsky *Three pieces*

Gershwin *Four song transcriptions*

Julian Hellaby Piano

Free entry, with retiring collection

## Sat 16 May - Men's Breakfast in Michaelhouse



Men's Breakfast 9.00am  
(and women are welcome too!)

Starting with Communion in the Harvey de Stanton Chapel  
(Michaelhouse)

Followed by breakfast in the Montefiore Room.

All are welcome - you can just turn up.

Please contact [office@gsm.cam.ac.uk](mailto:office@gsm.cam.ac.uk) for more information.

## Sat 16 May - Friends of Michaelhouse Concert - Michaelhouse, Trinity Street 1-2pm



Eira Lynn Jones

Welsh harpist Eira Lynn Jones' passion for all things harp makes her a true ambassador for this magical instrument.

She combines the three strands of her illustrious career as performer, teacher and composer. Her two solo albums

gained critical acclaim, showcasing her

imaginative programming on both pedal and lever harp.

*Andrés Marche – Pavane (Automates)*

*Britten Interlude (Ceremony of Carols)*

*Ellerby Cinq Hommages Français*

*Trad. Glenlivet*

*McKay Swan LK243*

*Lynn Jones Mermaid's Dance – Rising Waters (The Sunken Forest Suite)*

*Appleby Knocking*

*Gershwin arr. Pool I Got Rhythm*

Free entry, retiring collection in aid of Michaelhouse Singers

## Sat 16 May - Benjamin Britten talk



Fund-raising event for Great St Mary's arranged by the Academy of Great St Mary's Orchestra  
Saturday 16 May 7pm in the church

"Benjamin Britten and Peter Pears at the Red House: Shared Lives, Shared Legacy"?

by Christopher Hilton

Head of Archive and Library, Britten Pears Arts followed by a wine reception and Q&A.

Tickets £12 (Under 16 free) from the ADC and GSM shop

Info: [wardenm@gsm.cam.ac.uk](mailto:wardenm@gsm.cam.ac.uk)

## Sun 17 May - Come and Sing

Are you an experienced singer and a good sight reader? Do you enjoy a challenge?

**Ascendit Deus**  
Peter Phillips

**Gloucester Service**  
Herbert Howells

**Viri galilaei**  
Patrick Gowers

**Responses**  
Bernard Rose

**Ascensiontide**

# Come & Sing

at Great St Mary's for advanced singers

Scan the QR code to sign up

**Sunday 17 May**  
**1500 Rehearsal**  
**1700 Evensong**  
**followed by fizz**

Music @ GSM



Great St Mary's  
THE UNIVERSITY CHURCH CAMBRIDGE

## Pastoral Care

### Pastoral Care and Prayer at Time of Need

#### Pastoral Visits and Home Communions

If you would appreciate a pastoral visit at home or to receive prayer (either by the Home Intercessors group or as part of the intercessions in GSM services) please do talk to one of the ministry team either in person or contact them via email on [clergy@gsm.cam.ac.uk](mailto:clergy@gsm.cam.ac.uk)

Please know that you can request a visit from one of the clergy who would be delighted to share Holy Communion with you and your loved ones at home.

If you would like to know more about either the Home Intercessors or the Pastoral Care Groups from the point of view of joining either group, do please talk to Ally or Clare (or send an email to [clergy@gsm.cam.ac.uk](mailto:clergy@gsm.cam.ac.uk) ).

#### Funeral Plans

Many people find it helpful to think about their funeral wishes well in advance, and to talk to their family about this, or to a member of the clergy. To help you think about funeral planning please feel welcome to download this [Funeral Wishes Form](#) and use it to record your thoughts. When you are ready, please share what you have noted with your next of kin, and consider if you would like this to be shared also with the clergy team at Great St Mary's so that we can keep it safely for you.

In a pastoral emergency the phone number remains 01223 747277 (messages left on this number will be responded to within 24 hours)

### Clare Stephenson



Revd Clare Stephenson, Assistant Curate: Extended placement from June 2026

From this June onwards, Clare will be on an extended placement at St. Andrew's, Cherry Hinton, until the end of the year. This will give her an opportunity to experience a more conventional parish setting, given that Great St Mary's is a very specific parish with a large, gathered congregation, serving the University of

Cambridge and the City. We do not have to say 'thank you and good-bye' yet. Clare will return to Great St Mary's in January for a short period, to complete her curacy here. We will sorely miss her. In the two years she has been with us, she has made such an enormous contribution to our worship, pastoral and spiritual care and many other aspects of our church's life, including being our main Churchsuite administrator, having led the volunteer agreement process and instrumental in setting up the neighbourhood groups. Her last Sunday will be 17 May. Please, keep Clare and the ministry team in your prayers in these coming months.

## Sharing Bread: Exploring Holy Communion



sessions will be called 'Sharing Bread.'

A number of children in the congregation would like to start receiving the bread at communion, which is lovely. At Great St. Mary's, the pattern has to been set aside a particular Sunday for children to take communion for the first time, and to offer a few sessions before that for the children to explore the theology and practice of Holy Communion together. This year these

The First Communion Sunday will be Sunday 7th June, which will be an All Together service. And the Sharing Bread sessions will be after the 10 o'clock service on Sunday 19th April, Sunday 3rd May, and Sunday 17th May. Some children at Great St. Mary's have been receiving communion from a young age, especially those who attend[ed] The Ark - which is our Tuesday morning communion service for 0-5s and their parents/carers. That is lovely too! They are also very welcome - in fact, encouraged! - to sign up for the Sharing Bread sessions, so that they can think about Holy Communion some more as well.

The sessions will be suitable for any children in school years 1-6. If your child would like to attend the sessions, please register them here (<https://greatstmarys.churchsuite.com/-/forms/jb8wul67>) . (If you have more than one child who would like to attend, you will need to fill in one form for each child).

## Year's Mind

*Almighty and eternal God, from whose love in Christ we cannot be parted, either by death or life: hear our prayers and thanksgivings for all whom we remember this day; fulfil in them the purpose of your love; and bring us all, with them, to your eternal joy; through Jesus Christ our Lord. Amen.*

Herbert Robinson	2 May
Philip Oswald	5 May
Graham Moffat	8 May
Dominick Spencer	8 May
Colin Rosenstiel	8 May
Pauline Davison	13 May
Richard Ames-Lewis	18 May
Graham Sudbury	23 May
Victoria Heward-Mills	25 May
Brenda Hayward	31 May



## Service

### Dr Frank King - The University Bellingranger



Fifty Glorious Years of Service

Dr Frank King is something of an institution at Great St Mary's. He has been a member of the band since 1974 when he was a researcher at the university and on the 14th

of April 1976 he was appointed jointly by the University and Church as The

University Bellringer. This is a position Frank has now held for 50 years.

On Sunday 12th of April 2026 Frank, as usual, went to the 8am Holy Communion service, after which he popped into the clock room to check the number of pennies on the pendulum (used to adjust the clock to be no more than three seconds fast or slow) and then ascended the tower to the ringing room with a view to replacing the moth traps before 9am when morning ringing begins. Usually, Frank is first up the tower but for some reason there were already quite a few ringers in the ringing room. No matter and unperturbed, Frank went up to the void (the intermediate chamber between the ringing room and the belfry) and replaced the traps there and then descended to a now packed and noisy ringing room. It was 8.40am.

Soon we were joined by the vicar of GSM and President of the Society of Cambridge Youths (SCY), the Revd Canon Jutta Brueck, and by the University Ceremonial Officer and longtime friend of Frank's, Tim Milner (sporting his university attire). Jutta began proceedings by stating that we were gathered to congratulate Frank, who looked surprised, on his 50 years of service as University Bellringer. She then presented Frank with the Etheldreda Medal for 'generous and outstanding service;' a biennial award made by the Bishop of Ely. Tim followed this by presenting Frank with a certificate of appreciation from the University Vice-Chancellor along with a card signed by Proctors' Beadles and various University dignitaries. Next up was the SCY Master, Greg Chu, who presented Frank with an engraved glass plaque and commemorative certificate. Finally, Amy Dunn, Cambridge University Guild Master, presented a framed A3 print of classic Frank images: ringing, university activities, and in the clock room.

Frank was most appreciative of the outpouring of warmth and goodwill from everyone present. To everyone's amusement, Frank began his response in Latin by quoting Virgil from the Georgics. On request, he followed with a translation. Some light-hearted ripostes ensued on the theme of his having just received all this paperwork, noting that fifty years ago he had to write his own job spec for the University Bellringer role.

The formalities over and after a few prayers, a half course of Etheldreda Delight Major was rung on the back eight especially for the occasion. Normal service

ringing then resumed.



## Volunteer Needed



Great St. Mary's would love to hear from a volunteer with some graphic design expertise to support us for a one off project designed to improve our visitor experience - can you help? If so please contact [office@gsm.cam.ac.uk](mailto:office@gsm.cam.ac.uk)

## Christian Aid



Last year GSM was able to submit a whopping £2,000 to Christian Aid. This was courtesy of several events: tea/coffee parties, donations in church, the sale of cards and the regional service celebrating the 80th birthday of Christian Aid with Dr Rowan Williams as preacher.

The service this year will take place at St Andrew's Church, Cherry Hinton on Sunday 17 May at 4pm (see details below). There will be a Christian Aid speaker

and refreshments will follow. All are welcome, so do make a note in your diary. In the meantime it is the time of year when I invite house groups and individuals to hold coffee or tea parties in aid of Christian Aid - gift envelopes provided. Gatherings can be held any time in May, or even into June, but I have to send all the money into HQ by the end of June. It would be lovely if some more individuals might perhaps gather neighbours and friends, maybe in the garden; it does not have to be church members only. I already have two offers of a date, which is very encouraging. If you would like to be invited, do let me know

- [lorna\\_atwell@hotmail.com](mailto:lorna_atwell@hotmail.com) - and I can team you up with a party near you.

As for the sale of cards...they will be available at a very reasonable £1 each at coffee during all the Sundays in May. Come prepared with a list of birthdays, anniversaries etc (and some loose change; no bank cards I'm afraid). There are also some lovely blank cards suitable for all occasions. I have paid for the cards myself so 100% of all sales will benefit Christian Aid directly and I am most grateful for your support.

**Lorna Atwell**



**Share joy  
Grow hope  
Fight hunger**

Join the fun this Christian Aid Week, 10-16 May, and put **hope into action.**

Fridah, with grandpa Quilian, joined a Christian Aid funded urban farming project in Nairobi, Kenya.

**Cambridge Christian Aid Ecumenical Service**  
St Andrew's Parish Church, Coldhams Lane, Cherry Hinton, CB1 3JS  
Sunday 17th May, at 4 pm

Join us to learn about Christian Aid Week, to meet other supporters & to meet our new Regional Officer, Kevwe Edekovwere.  
Followed by refreshments.

**All are welcome!**

For more information, please contact Sheila Porrer  
[sheila.porrer@virginmedia.com](mailto:sheila.porrer@virginmedia.com)



Together we can support someone like Fridah to grow food, protect their children from hunger and nurture hope.

#7DaysToMakeADifference

## Eco Tip - No Mow May



No-mow May. Don't cut your grass in May and allow insects to take advantage of the flowers you didn't realise you had in your garden! The photo shows my back garden last week. Amongst the daisies: Pansies, Forget-me-not, Stork's-bill, and Purple Dead Nettle. Did you know that Purple Dead Nettle (*Lamium purpureum*) is a highly nutritious, edible spring weed with anti-inflammatory, antibacterial, and anti-fungal properties. It is primarily used to reduce seasonal allergies, treat wounds as a poultice, and act as a natural diuretic. It is safe for consumption and often found in salads, smoothies, or teas.

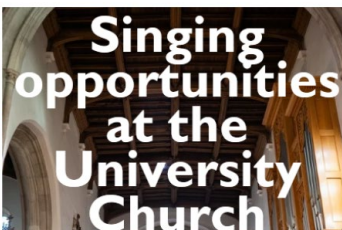
## Adult Choirs at Great St. Mary's



The Choirs of  
Great St Mary's



Great St Mary's  
THE UNIVERSITY CHURCH CAMBRIDGE



From September 2026, we are changing the way adult singing works in the choirs of Great St Mary's. Currently, we have one adult choir, known as the back row, a group of

committed and loyal volunteers many of whom have sung as part of our choir for decades. From September, this choir will be succeeded by two new ensembles, the Parish Choir and the Lay Clerks. All of our current choir members will continue to sing as part of one of these choirs, and the new arrangements will enable us to do three things: to bring more adult singers into GSM music-making, especially by involving adult sopranos as part of the choral foundation for the first time; to provide a better musical education to the choristers by allowing them to build a repertoire of high-quality SATB (Soprano, Alto, Tenor, Bass) music; and to offer SATB music at all Sunday services.

#### PARISH CHOIR

The Parish Choir will be an auditioned SATB Chamber Choir, made up of volunteer singers drawn from across the Cambridge area. It will sing independently and together with our teenage youth choir. The choir's repertoire will be broad and imaginative, encompassing both challenging and simple music drawn from all eras from the 16th Century to the present day. The Parish Choir will rehearse on Friday evenings (1900-2030) and will usually sing for one service each Sunday: the Eucharist, Choral Mattins, or Choral Evensong.

#### LAY CLERKS

The Lay Clerks will be Great St Mary's ATB adult singers. They will contribute to the musical education of our treble line by providing a superb back row. We hope that membership of the Lay Clerks will be especially appealing to recent graduates, postgraduate students, and junior academics who have grown out of the college choirs, and seek a low commitment and high quality singing experience, and have a vested interest in the growth of the next generation of musicians. The Lay Clerks will sing with the choristers once a week, rehearsing directly before the Eucharist or Choral Evensong. Once a month, the Lay Clerks stay behind after a service to read through forthcoming tricky music.

Members of the congregation will hear both choirs regularly on Sundays, and several times a year all the choirs will join together to form the Full Foundation. Our Occasional Choir will continue to run in the same way as it does currently, providing music at services when there are gaps in the regular choirs' schedules. We have just started a recruitment campaign to attract new members to the Parish Choir and the Lay Clerks. Auditions will be held on 9 May. If you know anyone who might be interested, please do direct them towards our website

(<https://www.greatstmarys.org/adult-choirs>) or ask them to email Alexander Berry ([music@gsm.cam.ac.uk](mailto:music@gsm.cam.ac.uk)).

## Coming Up at GSM....

### Poems in Michaelhouse - until 10th May

#### A Poem for Nature - Exhibition

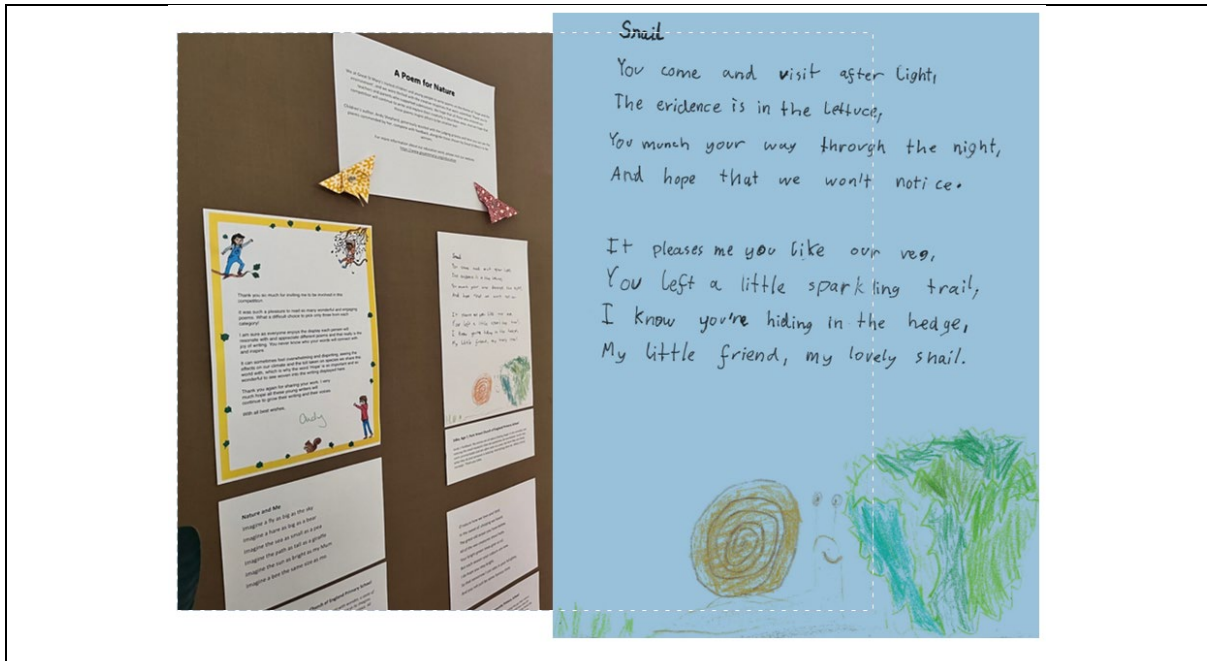
We invited children and young people to write poems on the theme of 'Hope and the Environment', and we were thrilled with the creative responses that were submitted. Children's author, Andy Shepherd, assisted with the judging process, and we are grateful for her contribution, as well as to the parents and teachers who supported the young poets.

Snail by Edko, Aged 7

You come and visit after light,  
The Evidence is in the lettuce,  
You munch your way through the night,  
And hope that we won't notice.

It pleases me you like our veg,  
You left a little sparkling trail,  
I know you're hiding in the hedge,  
My little friend, my lovely snail.

You can see the winning poems on display in Michaelhouse until 9 May. Over the next few issues of eMag, we will print some of the winning texts. We hope you enjoy them!



## Pots in Michaelhouse - 11 May to 6 June



Charlotte Jones is an artist and teacher based in the West Midlands. She attained an MA in Fine Art from Coventry University in 2010. Following a break in practice she returned to painting attending short courses at Heatherley's School of Art in London. Charlotte primarily creates still life oil paintings observing objects such as flowers, food, vases, fabric and found items.

Charlotte has exhibited work in group shows at the Mall Galleries, RBSA Gallery, Derby Museum and Art Gallery, and the Herbert Art Gallery. She has also held solo shows at Rugby Art Gallery.

'Pots' is Charlotte's first solo exhibition since returning to painting. The exhibition at Michaelhouse Café, explores the beauty and elegance of spring flowers. The plants in each still life are arranged simply, presented in the pots they were purchased in, against an unadorned backdrop. The setup allows the focus of each work to be the majesty and promise of each flowering plant.

**Sat 30 May**

**Pastoral Care Talk: "Sabbath Rest" with Charlotte Labalette.**

Michaelhouse. 10.30 (tea and coffee) for 11am start.

## Choir tour to Denmark & Sweden

In July, a group of over fifty members of Great St Mary's Choir will be travelling to Denmark and Southern Sweden for a five-day tour. As well as singing in some wonderful churches, they will visit the Roskilde Viking Ship Museum, Copenhagen's Tivoli Gardens, and feast on Smørrebrød and pastries! The choir would love it if members of the congregation would like to support us in our concerts and services. You can join us at the following times:

- Thursday 23 July, 3.00pm: Concert at [St Alban's Anglican Church](#), Copenhagen
- Friday 24 July, 12.00 noon: Concert at the [Trinitatis Kirke](#), Copenhagen
- Saturday 25 July, 5.00pm: Concert at [Lund Cathedral](#) (Sweden)
- Sunday 26 July, 10.00am: Højmesse (communion service) at [Roskilde Cathedral](#)



## Elsewhere

### Beekeeper workshops

"What it means to Bee" - Explore the fascinating world of bees at Grand Arcade, as part of our Let's Go Circular Campaign. With hands-on activities, a real hive, and take-home treats, this is the perfect activity for families this May half-

term. Saturday 16 May - Sunday 31 May


REGENERATE & PROTECT

# WORKSHOPS WITH OUR FAVOURITE BEEKEEPER

16, 17, 23, 24, 27, 30, 31 MAY




## Symposium at St John's



ST JOHN'S COLLEGE  
UNIVERSITY OF CAMBRIDGE

### PUBLIC FAITH COMMON GOOD CHRISTIAN SOCIAL ORDER

A Day Symposium




**Tuesday**  
**21 July 2026**  
10am - 4pm  
in the Old Divinity School

with  
Rowan Williams, Guli Francis-Deqhani,  
Nick Spencer, Anna Rowlands,  
Alison Webster, Anderson Jeremiah,  
Rob Wickham and Malcolm Brown

CHURCH TIMES  The Church of England  
Diocese of Ely

The Common Good Programme  
Free event  
Open to all  
Booking required at [elydatabase.org/events/mission\\_ministry](https://elydatabase.org/events/mission_ministry)



## MINISTRY TEAM

	<p><b>Revd Canon Jutta Brueck</b>  <b>Vicar</b>            email: <a href="mailto:juttab@gsm.cam.ac.uk">juttab@gsm.cam.ac.uk</a></p>		<p><b>Revd Ally Barrett</b>  <b>Associate Vicar</b>            email: <a href="mailto:allyb@gsm.cam.ac.uk">allyb@gsm.cam.ac.uk</a></p>
	<p><b>Revd Clare Stephenson</b>  <b>Assistant Curate</b>            email: <a href="mailto:clares@gsm.cam.ac.uk">clares@gsm.cam.ac.uk</a></p>		<p><b>Revd Andrew Day</b>  <b>Associate Priest</b>            email: <a href="mailto:acd62@gsm.cam.ac.uk">acd62@gsm.cam.ac.uk</a></p>
	<p><b>Revd Alison Kennedy</b>  <b>Associate Priest</b>            email: <a href="mailto:alisonk@gsm.cam.ac.uk">alisonk@gsm.cam.ac.uk</a></p>		<p><b>Dr David Grumett</b>  <b>Licensed Lay Minister</b>            email: <a href="mailto:davidg@gsm.cam.ac.uk">davidg@gsm.cam.ac.uk</a></p>
	<p><b>Revd Graham Stevenson</b>  <b>Associate Priest</b></p>		<p><b>CHILDREN &amp; YOUTH</b>            Great St Mary's offers a range of groups and activities for children from birth to 18.  <b>Revd Rosie Hewitt</b>  <b>Children and Youth Minister</b>            email: <a href="mailto:rosieh@gsm.cam.ac.uk">rosieh@gsm.cam.ac.uk</a></p>

## MUSIC AT THE UNIVERSITY CHURCH

Great St Mary's has a long and rich tradition of music, with six choirs, two pipe organs, an orchestra, and weekly concerts.

	<p><b>Alex Berry</b>  <b>Director of Music</b>            email: <a href="mailto:music@gsm.cam.ac.uk">music@gsm.cam.ac.uk</a></p>		<p><b>Stanley Godfrey</b>  <b>Assistant Director of Music</b>            email: <a href="mailto:music@gsm.cam.ac.uk">music@gsm.cam.ac.uk</a></p>
---	---	--	--

## EDUCATION AT THE UNIVERSITY CHURCH

Great St Mary's regularly welcomes school groups and offers educational outreach around heritage, faith, and sustainability. To find out more, contact Natalie Lealand ([nataliel@gsm.cam.ac.uk](mailto:nataliel@gsm.cam.ac.uk)) or visit [www.greatstmarys.org/education](http://www.greatstmarys.org/education)